

INTERNATIONAL VAURIEN CLASS ASSOCIATION



The following amendments to the Class Rules have been approved to be effective 1st June 2016.

1. Current Rule:

C.5.1(b)(2)

One paddle minimum weight 0,250Kg and a minimum length of 800mm

Amended Rule:

C.5.1(b)(2)

One paddle minimum weight 0,250Kg and a minimum length of 800mm **and with a blade able to contain a rectangle of minimum dimensions 100x120mm, when required by the Notice of Race.**

2. Current Rule:

C.10.3

(c) As an alteration to RRS Appendix G National Letters on the spinnaker are optional

Amended Rule:

C.10.3

(c) As an alteration to RRS Appendix G National Letters **and sail numbers** on the spinnaker are optional

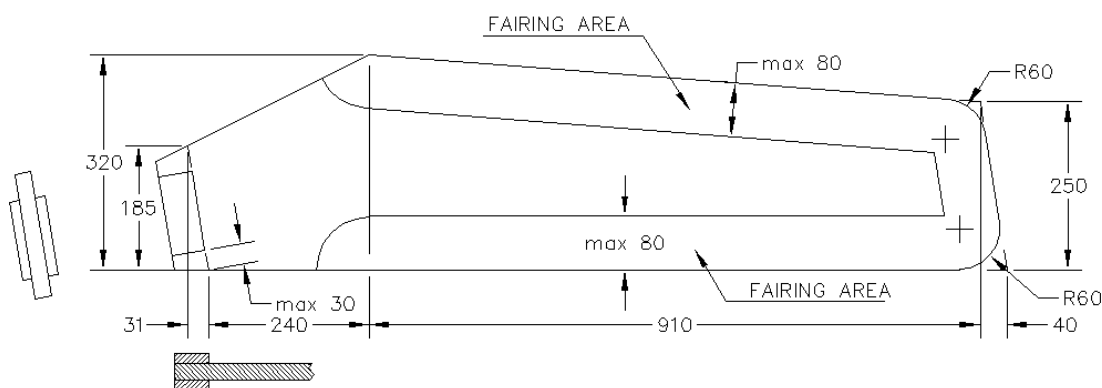
INTERNATIONAL VAURIEN CLASS ASSOCIATION

3. Current Rule:

E.3.3

(a) The dimensions of the **centreboard** shall not exceed those given on the diagram E.3.3.1.

CENTREBOARD MAXIMUM DIMENSIONS

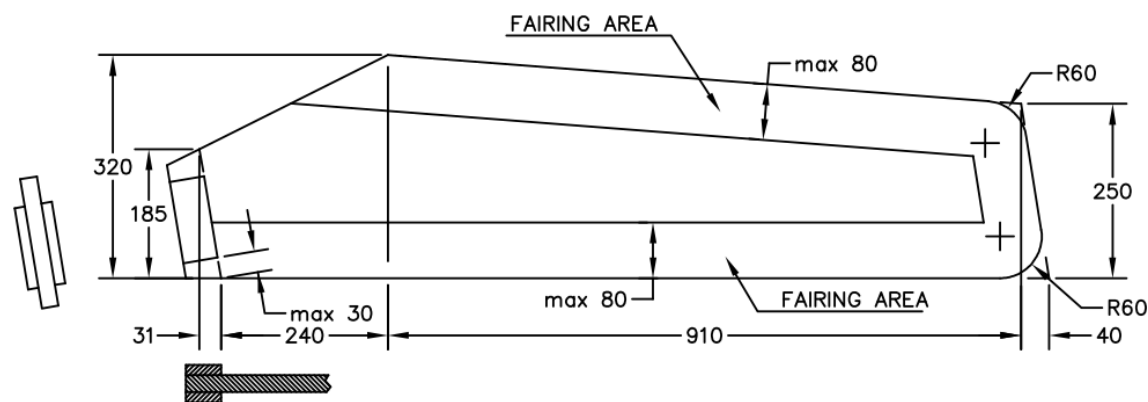


Amended Rule:

E.3.3

(a) The dimensions of the **centreboard** shall not exceed those given on the diagram E.3.3.1.

CENTREBOARD DIMENSIONS



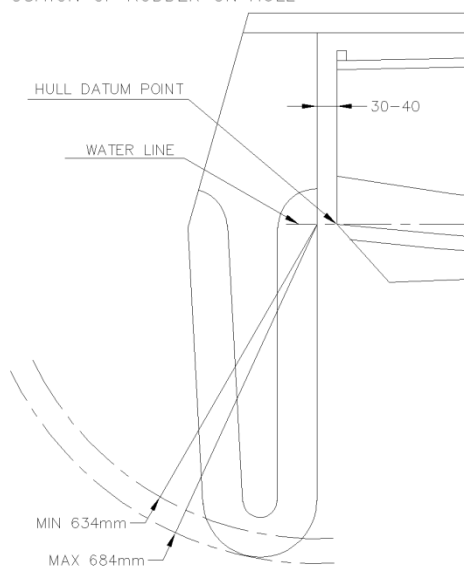
INTERNATIONAL VAURIEN CLASS ASSOCIATION

4. Current Rule:

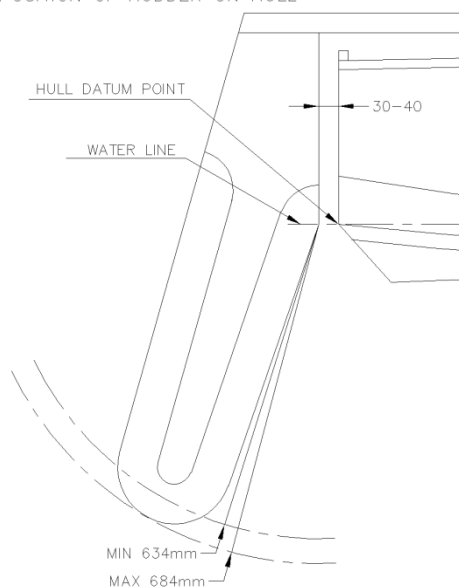
C.8.4 (a)(4)

~~The distance between the transom and the rudder head when set in the rudder fittings as shown in C.8.4.1 shall be between 30mm and 40mm.~~

POSITION OF RUDDER ON HULL



POSITION OF RUDDER ON HULL



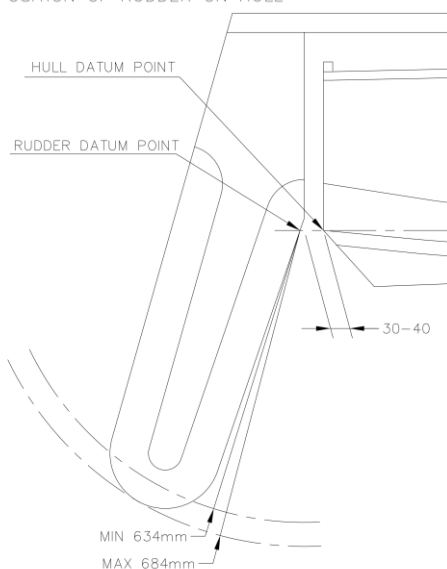
INTERNATIONAL VAURIEN CLASS ASSOCIATION

Amended Rule:

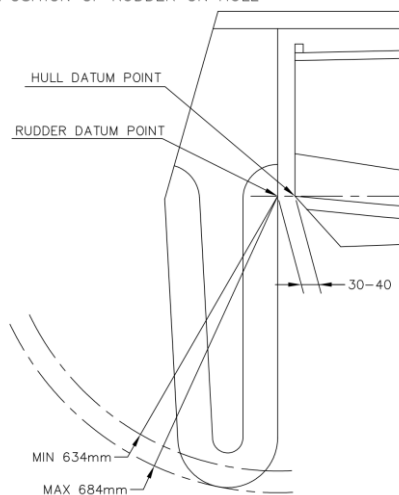
C.8.4 (a)(4)

When the rudder is set in the rudder fittings as shown in Fig C.8.4.1, the distance taken parallel to the baseline, between the Hull Datum Point and the leading edge of the rudder shall be between 30mm and 40mm.

POSITION OF RUDDER ON HULL



POSITION OF RUDDER ON HULL



5. Current Rule:

None

Amended Rule:

Add new row (50) in D.10.2 (b)

		MIN	MAX
50	The difference between the distance of axis of upper and lower pintles/gudgeons from the transom	0	5mm

INTERNATIONAL VAURIEN CLASS ASSOCIATION

6. Current Rule:

None

Amended Rule:

Add new rule E.4.4 (c)

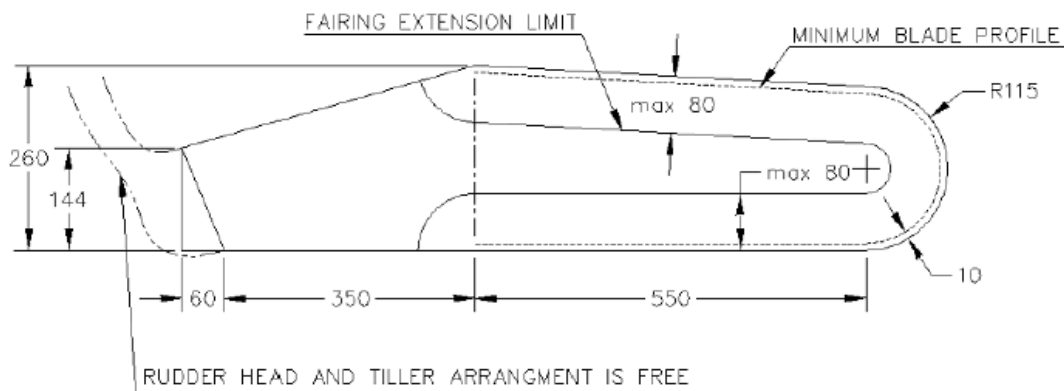
The difference between the distance of the axis of upper and lower pintles/gudgeons from the rudder blade template maximum boundary shall not exceed 5mm.

7. Current Rule:

E.4.4 (b)

The thickness of the rudder blade shall not vary more than 1mm and shall be of a minimum thickness of 18mm. except that the edges may be faired over a maximum distance of 80mm from the trailing, lower and leading edges as showing in Figure E.4.4.1.

RUDDER BLADE MAXIMUM DIMENSIONS



Amended Rule:

E.4.4 (b)

The thickness of the rudder blade shall not vary more than 1mm and shall be of a minimum thickness of 18mm. except that the edges may be faired over a maximum distance of 80mm from the trailing, lower and leading edges as showing in Figure E.4.4.1.

Hinged covers or other devices for closing the draining ports or drains in the transom.

INTERNATIONAL VAURIEN CLASS ASSOCIATION

Amended Rule:

Move rule to D.10.1(b)(9)

10. Current Rule:

None

Amended Rule:

Add new rule A.10.2:

In accordance with World Sailing RRS Appendix G.1.1(c), the MNA or NCA may issue personal sail numbers of no more than 3 digits (Sail numbers staying with the owner for every boat he legally possesses as long as he sails Vaurien) for which the IVCA may rise a fee. This number shall not conflict with existing numbers of active boats. After the sale of the boat, the new owner has to use her original sail number or his own personal number on his sails.

Personal numbers are allotted from 1st January to 31st December of every year.

The issuing authority shall make public the list of active personal sail numbers

11. Current Rule:

C.10.3 (b)

Competitors may use the sail number of a hull owned by them, on any boat chartered by them.

Amended Rule:

C.10.3 (b)

Competitors may use the sail number of a hull owned by them **or their valid personal sail number**, on any boat chartered by them.